



Clinical Psychology



**ALL IRELAND PSYCHOLOGY
CAREER EVENT**



**2ND MARCH 2024
UCD**

Dr Katarina Timulakova

Chartered Clinical Psychologist

Division of Clinical Psychology


The Psychological Society of Ireland

Overview

(Story of Emma)

-
- What pathways are there to clinical psychology?
 - What do clinical psychologists do?
 - Where do clinical psychologists work?
 - How clinical psychologists serve public & profession?





**What
pathways
are there to
clinical
psychology**





27 Psychological Society of Ireland Undergraduate Psychology Courses and 8 conversion courses



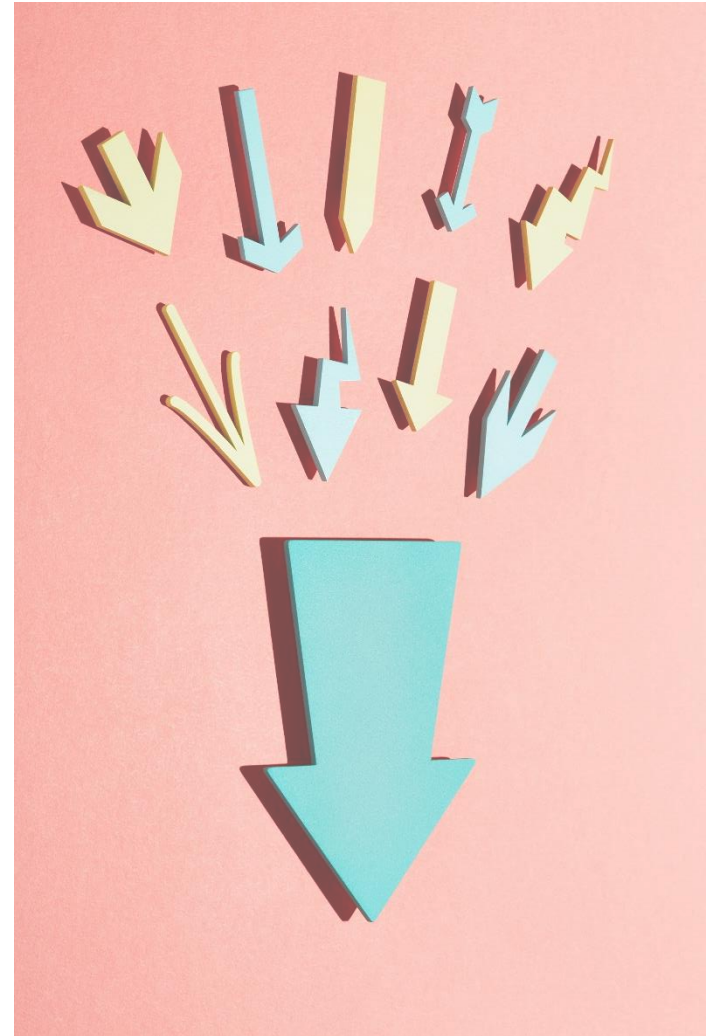
[EVENTS](#) [JOIN US](#) [ACCREDITATION](#) [SERVICES](#) [ABOUT](#) [GROUPS](#) [NEWS](#) [Q](#) | [MEMBER LOGIN](#)  

Accreditation

PSI Accredited Undergraduate Courses 

Points needed for some accredited Psychology undergraduate courses

- TCD 589
 - UCD 554
 - DCU 534
 - NUI Maynooth 533
 - NUIG 531
 - UCC 554
 - UL 510
- NCI: 391
- AIT: 408
- WIT: 456
- DBS: 252
- IADT: 414



Pathways into Undergraduate Psychology (Including Conversion Programmes)*

CAO Applications including HEAR, DARE, Mature & QQI places



BA/BSc in Psychology (includes single and joint honours programmes)

I have a level 8 degree in any subject (less than 60 ECTS in psychology)



Postgraduate conversion programme (typically 2 year Higher Diploma in Psychology)

I have a level 8 degree in any subject (with 60 ECTS in psychology)



Postgraduate conversion programme (typically 1 year MA/ MSc in Psychology)

All entry requirements can vary and can be viewed on the programme websites

PSI accredits over 30 programmes for first qualification in psychology. For more information, please visit our accreditation page on the PSI website.

Postgraduate clinical psychology courses

PSI accredited courses:

- NGUI Doctorate in Clinical Psychology
- TCD – Doctorate in Clinical Psychology
- UCD – Doctorate in Psychological Science in Clinical Psychology
- UCC - Doctorate in Clinical Psychology
- UL - Doctorate in Clinical Psychology

- NI – Queens University Belfast - Doctorate in Clinical Psychology (HCPC & BPS accredited)

Clinical Psychology

Undergraduate (3-4 years) or conversion course



Master's degree (optional)




2-3 Years Relevant Experience
(e.g. Assistant Psychologist)



3 Years Doctoral Training





What do
clinical
psychologists
do?



Competencies of a clinical psychologist

Assessment

Formulation

Intervention

Use of supervision

Communication

Advocacy

Leadership

Teaching

Research & evaluation

Meta-competencies of clinical psychologists

Integrity and ethical awareness

Adaptability

Conceptual & critical Ability


Self-care, reflectiveness, & personal awareness

Relationships

Scientific thinking

Professional issues awareness

Diversity awareness & responsiveness



Where do clinical psychologists work?



Areas of work

Public services: HSE & HSE funded voluntary services

Private services

- Primary Care Psychology
- Child & Adolescent Mental Health Services (CAMHS)
- Adult Mental Health Services
- Disability Services
- TUSLA
- Irish Prison Services
- Student Counselling Services
- Acute General Hospitals & Rehabilitation units
- Neuro Psychology Services
- Private Practice
- Corporate
- Policy development

Child and adolescent psychology services

- Primary care child & adolescent services
- Lifespan primary care services
- Community Mental Health Services
- Day hospital child & adolescent mental health services
- Inpatient child and adolescent mental health services

- Specialized child & adolescent services – sexual trauma unit, general hospital liaison, child oncology, neonatology

Adult psychology services

- Primary care Psychology service
- Adult community mental health services
- Adult Day hospital mental health services
- Adult inpatient mental health services
- *Specialised adult services*: older adult mental health services (community, day hospital, inpatient, rehabilitation), forensic mental health services (community, hospital, rehabilitation), oncology, neurology, general hospital various units,


Disability services

Public services HSE:

- Children's disability network teams –18yo
- Early intervention teams 0-6
- From Congregates spaces to community living
- Community care service

HSE-funded voluntary services:

- Enable Ireland
- St Michael's house
- St John's of God services
- Central remedial Clinic
- Irish Wheelchair Association
- NCBI – working with people with sight loss
- Chime – deafness and hearing loss charity



**How clinical
psychologists
serve public &
profession?**



'Tis the season to be aware of SAD

Seasonal Affective Disorder is very similar to depression as we classically know it but it has a qualifier in that it has a seasonal pattern

Wed, Jan 5, 2022, 06:01

Louise Ní Chríodáin



In the past what we now describe as Seasonal Affective Disorder would have been known as the winter blues

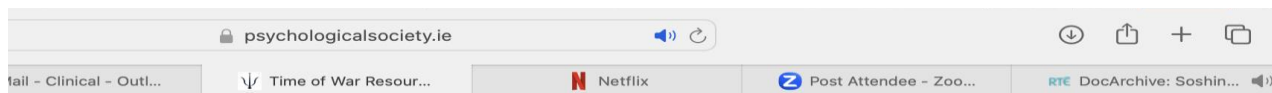


Dr Anne Kehoe is a senior clinical



Supporting public

PSI Position on repealing the 8th amendment



Time of War Resources

Resources for psychologists, refugees, and members of the general public during times of war

Following a number of significant international conflicts, the PSI has set up a resources section which aims to provide assistance to those who have been affected by war.

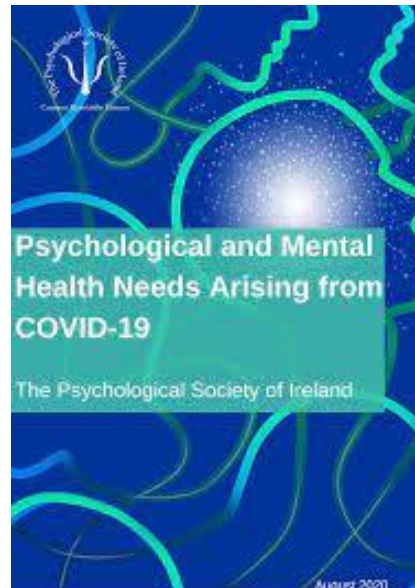
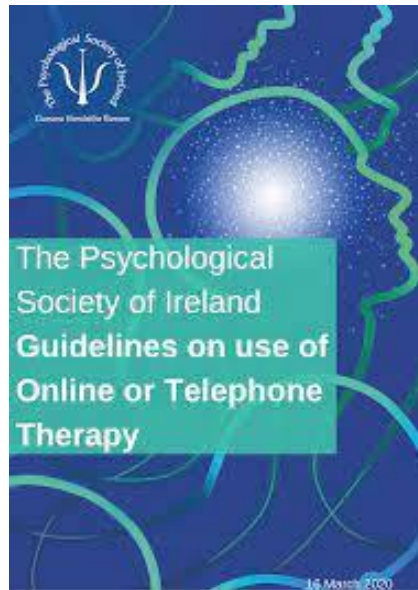
Psychological science recognises that the effects of war on wellbeing are many: from the fundamental needs of basic safety and access to food and clean water, through to the impacts of stress and uncertainty and grief for the loss of those who are close to us.

These impacts are felt not just in locations affected by war, but throughout the world. This includes those who are seeking refuge in countries like Ireland, those who host them, and those who already live in Ireland but who are distressed as they relate to those abroad who are experiencing the challenges of war.

Influencing policies supporting people in need



Psychological Society of Ireland (PSI)



International liaison with psychological professional organisations

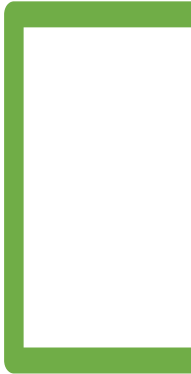
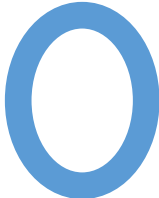




You are
warmly
welcome
to join PSI



- Questions





Thank you

