



Letter to the Health and Social Care Professions From the National Clinical Programme for People with Disability (NCPDP)

Dear All,

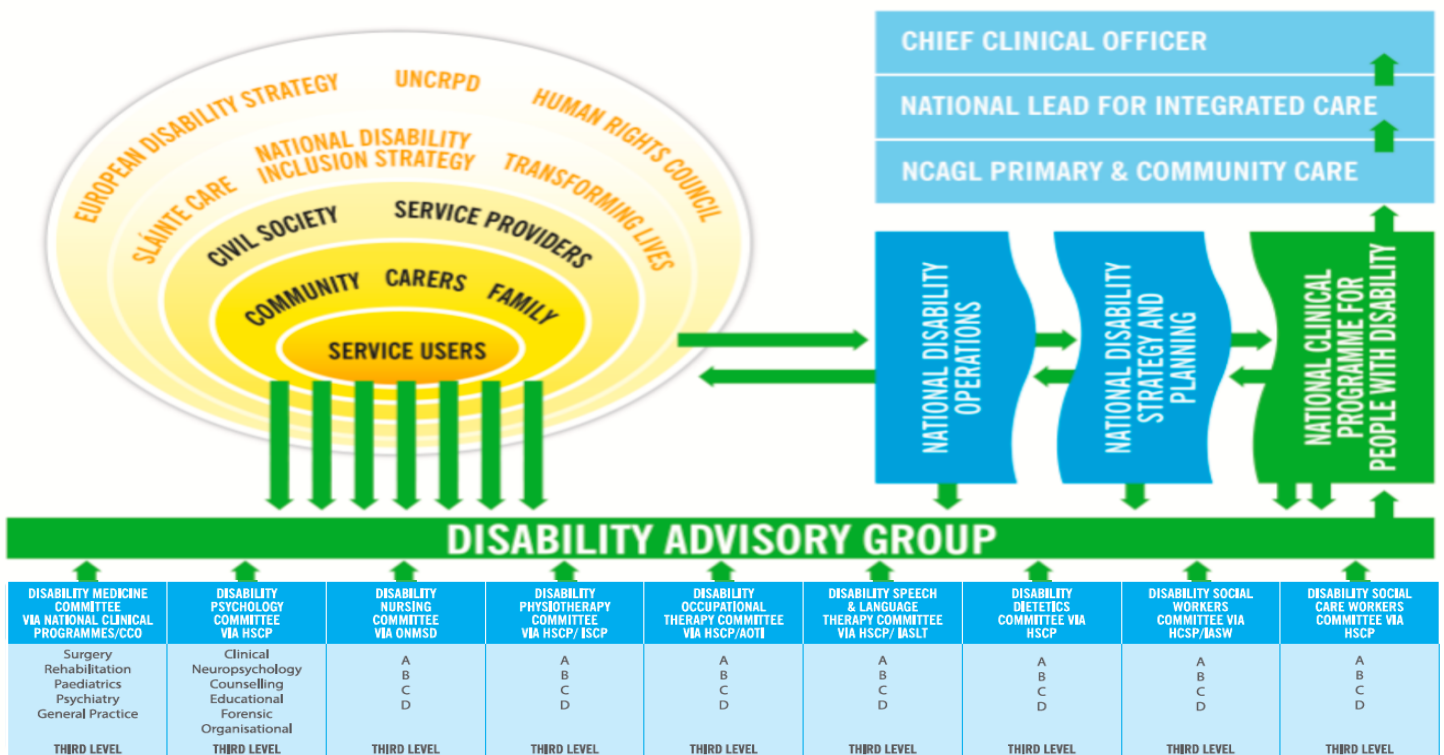
We appreciate many of you are working and living under very difficult circumstances at the moment. Thank you for the services you are delivering at such a trying time.

We wanted to write to you regarding a number of issues.

National Clinical Programme for People with Disability

The first is to do with the establishment of the new National Clinical Programme for People with Disability (<https://www.hse.ie/eng/about/who/cspd/ncps/disability/>). This new programme provides parity and equal representation across all professions, along with a strong representation from people with lived experience and civil society. In time we will be developing Models of Care/Service across a range of areas within disability and seeking Clinical Leads for these. The governance structure of the programme is shown below. Recruitment is under way and we aim to have these structures in place by the end of March. Recruitment from each of the professional representative bodies is via the office of the Health and Social Care Professions who have existing relationships with each of your professions.

The Programme Architecture





New Investment in HSCP Positions

The NCPPD will become the forum to address many of the existing and new challenges regarding the design of disability services; working in close collaboration with our colleagues in Disability Operations and Disability Strategy and Planning. Clinical design is the function of the NCPPD and we look forward to working with you through your representative professional bodies. As you may know, once again, an additional 100 new clinical posts in disability services will be provided this year, forming part of an additional €100 million new investment, building on the €2 billion already aligned to specific disability supports in the State. One of our key challenges will continue to be identifying the best use of resources to address the needs of people with disabilities

Standard Operating Procedure

The Service Improvement Programme for the Autistic Community had established an Assessment and Pathways Working Group; the work of which was disrupted by Covid. This working group is now up and running again with myself as the Chair in my role as Clinical Lead for the NCPPD. While autism assessment and services are a distinct challenge, we recognise that this work also overlaps with the Assessment of Need and the Standard Operating Procedure (SOP) in general.

We are aware of the challenges and concerns expressed about the SOP, which have been very clearly expressed to us by your representative organisations. In this context, please be assured that we will be drawing on your experience. Through the NCPPD we will be developing a model that balances the many competing challenges in effectively and efficiently addressing the needs of people with disabilities; in a timely manner, meeting legislative requirements, and within the resources and staff available to us. We look forward to working with you on this as key stakeholders.

The NCPPD will provide new opportunities, new challenges and new responsibilities for the HSCPs; working in an interdisciplinary context, with service users, to design what is possible to implement in the Irish health and social care system. We do not underestimate the difficulties that have to be addressed but we are very optimistic that real progress can be made.

Again, we thank you for the work you are doing and for your perseverance while these new initiatives gain traction in the current situation.

Mac MaLachlan
Clinical Lead

Michael Walsh
Programme Manager